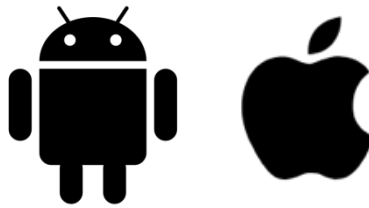


HouseMate

HouseMatePro Mk4 Pairing Instructions



This guide describes how to pair HouseMatePro Mk4 hardware with an Android or iOS device.

It assumes that you have already installed the **ClickToPhone App** on your Android device and the **HouseMate Home Control App** on your iOS device.

Please note that if you wish to reboot the HouseMate for a different platform you need both an iOS and Android device. The HouseMate is shipped booted for Android unless requested otherwise.

Using with an Android device

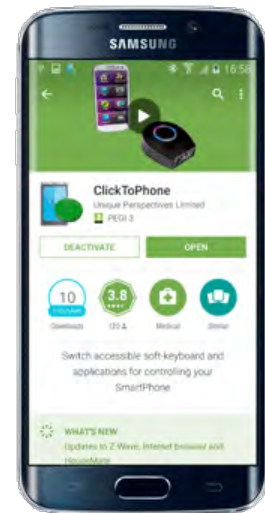
The first step is to install the ClickToPhone app from the Google Play Store. Search for “ClickToPhone”.

Alternatively you can install from our website. Launch a browser on your phone and follow the instructions at

<http://www.click2go.ie/resources/manuals/clicktophone-android-app/>

After installation, open the app. The setup wizard will automatically start and you will be guided through the following steps.

- Confirming ClickToPhone as an Input Method
- Activating ClickToPhone as a Device Administrator
- Disabling the screen lock
- Choosing ClickToPhone as the current Input Method
- Installing the bundled apps
- Choosing a user level
- Choosing the contents of the ClickToPhone homepage
- Choosing the style of the ClickToPhone homepage
- Choosing a theme
- Choosing the telephony behaviour
- Choosing the scanning method and speed
- Pairing your hardware

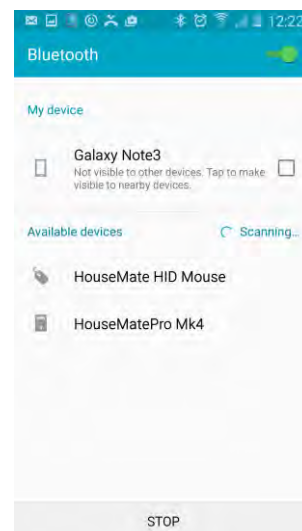


Setting up your device

From the final step of the Wizard click on the **Continue** button **OR** if you are in Stand Alone Mode choose **Project Settings->Preferences->Bluetooth Setup->Bluetooth Settings**. You will be brought to the phone’s bluetooth settings page.

Step 1: Pairing HouseMatePro Mk4

1. Ensure that bluetooth on your phone is switched on.
2. Make sure HouseMatePro is off. This is important to ensure that there will be sufficient time for the pairing and connect process to complete correctly.
3. Click on the **Scan for devices** option.
4. Now turn on HouseMatePro by pressing it’s push button.
5. After a moment you should see **“HouseMatePro Mk4”** and **“HouseMate HID Mouse”** appear in the list of available devices.

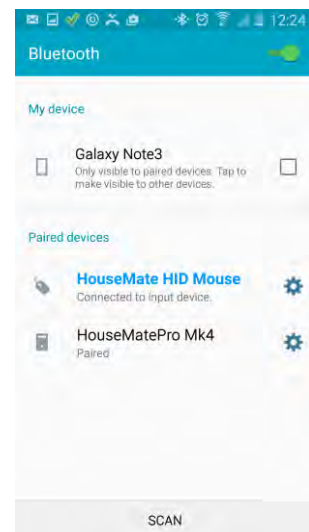


Note: If your device appears as “**HouseMate Switch**” at this stage then it is booted for an iOS device and will not work on an Android. You will have to connect it to an iOS device and carry out the reboot procedure to switch it back to Android operation.

- Click on the “**HouseMatePro Mk4**” entry. Do not click on the “**HouseMate HID Mouse**” at this stage. After a successful pairing you should see the popup message “**HouseMatePro Mk4 has been successfully paired**” and you will be brought back to the ClickToPhone app.
- Now the **Pair the HID module** window will appear with instructions on how to pair the HID component within HouseMatePro Mk4. At the same time the software will start trying to connect to your hardware. You must wait at this step until the ClickToPhone status changes from **Connecting to Hardware...** to **Connected**. The blue LEDs on HouseMate will illuminate at this point.

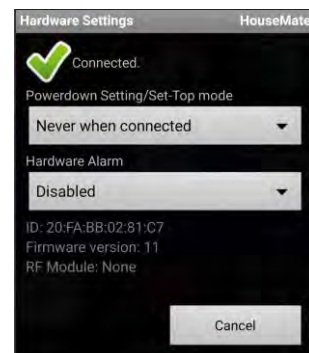
Step 2: Pairing the HouseMate HID Mouse

- Now that HouseMatePro has paired and connected, click on the **Continue** button of the **Pairing the HID dialog** to be brought back to the phone’s bluetooth settings.
- Now click the **HouseMate HID Mouse** entry and after a moment it should automatically pair. This may take 2 or even 3 attempts
- If successful, the **HouseMate HID Mouse** entry should turn blue and move into the list of paired devices. Depending on the make of your phone, the bluetooth symbol in the status bar should now have two horizontal lines on opposite sides or turn a different colour. Click the **Back** key to return to ClickToPhone. The HID Mouse is now ready for use.



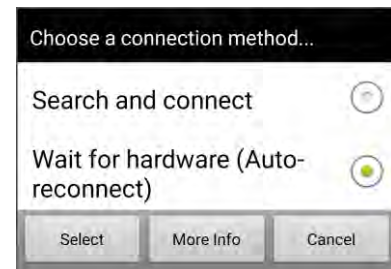
Step 3: Confirming the hardware settings

At this point you may be warned that there is a Hardware Settings Conflict. This means that the hardware settings are different from those that are defined within the current project. To check the hardware settings click **Continue** and choose the required **Powerdown Setting** and **Relay Output Settings**. Refer to the manual on the SD card for further guidance.



Step 4: Selecting the connection Method

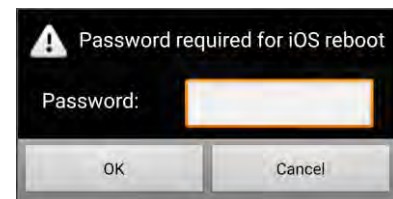
The last step is to choose the connection method for future connections. There are two choices: “**Wait for hardware**” or “**Search and Connect**”. “Wait for hardware” is the recommended method for Mk3 and Mk4 devices. In this method the hardware auto-reconnects to the phone when it is turned on thus saving your phone’s battery life. The “Search and Connect” method, though more reliable and quicker, uses more power as the app is constantly searching for your hardware.



Rebooting for use with an iOS device.

To reboot your hardware for use with an iOS device you need to be connected to an Android.

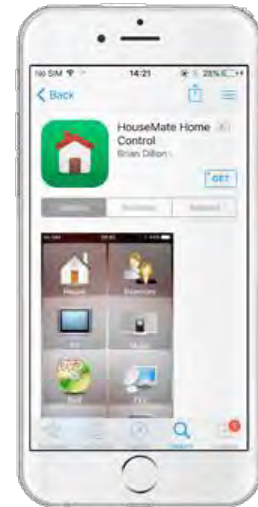
1. Make sure that you are connected and choose **Project Settings->Preferences->Bluetooth Setup->Advanced Settings->Reboot for iOS**
2. Enter the password “apple”
3. You will be asked to unpair the HouseMate HID Mouse before the reboot can take place. This is because the HID must be reconfigured as a bluetooth keyboard – “HouseMate Switch”.
4. The unit will emit a long beep and the red and orange lights will illuminate. HouseMate is now ready for use with an iOS device. Note that no InfraRed signals are erased in this procedure.



Using with an iOS device

The first step is to install the HouseMate app from the App Store. Search for “**HouseMate Home Control**”.

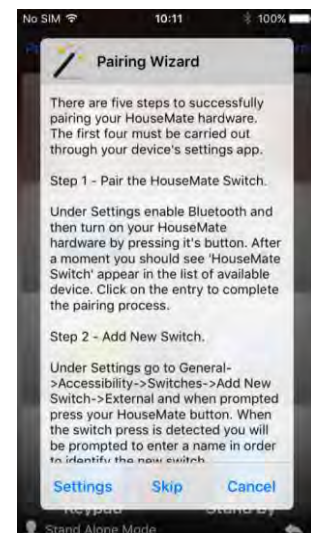
After installation, open the app. The first time you launch the app it will automatically open in technician mode. On future launches it is necessary to press and hold the spanner icon in the bottom right of the screen for 5 seconds to enter technician mode.



Setting up your device

Choose **Project->Setup your devices->HouseMate hardware->Pair your hardware**. The Pairing wizard is presented. Read the instructions carefully as these steps must be carried out manually within the iOS Settings page.

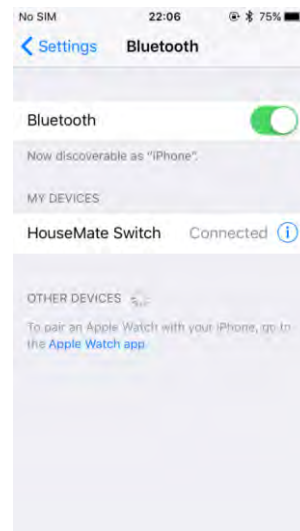
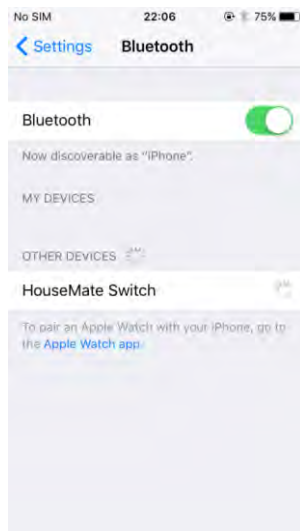
If you intend to use the touch-screen only then you can click **Skip** and jump to step 5 below.



Step 1: Pairing the HouseMate Switch

The first step is to pair the HouseMate Switch. This switch is used to drive the iOS scanning.

When you are ready choose **Settings** and you will be brought to the iOS Settings page. Navigate to **Settings->Bluetooth**. Turn on Bluetooth and then turn on your HouseMate hardware by pressing it's switch. After a moment you should see **HouseMate Switch** appear.



Click on the **HouseMate Switch** entry to complete the pairing process. After a moment it should move into the list of **My Devices** with the word **Connected** beside it.

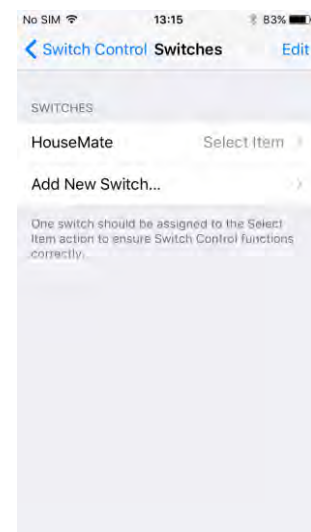
Confirm that the blue LEDs on your HouseMate hardware are blinking.

Note: If your device appears as “**HouseMatePro Mk4**” at this stage then it is booted for an Android device and will not work on an iOS. You will have to connect it to an Android device and carry out the reboot procedure to switch it to iOS operation.

Step 2: Add New Switch

You are now ready to set up the HouseMate switch to drive the iOS scanning. Navigate back to **Settings** and then choose **General->Accessibility->Switch Control->Switches->Add New Switch->External** and press your switch.

When the switch press is detected you will be prompted to enter a name for the switch. Choose “HouseMate”.



Step 3: Choose a switch action

Now you must choose the switch action that will occur whenever you press your switch. For scanning purposes this will be the **Select Item** action.

Under **Switches** choose the newly added HouseMate switch and then choose the **Select Item** action.

Step 4: Enable & optimize Switch Control

This is the last step to set up the HouseMate switch to drive the iOS scanning. Navigate back to Switch Control.

Tap Behaviour

We recommend setting the **Tap Behaviour** option to **Always Tap**. In this mode the option to carry out other actions is always displayed at the end of a complete screen scan, rather than every time you press your switch.

Large Cursor

For high visibility of the scanning cursor we recommend turning on the **Large Cursor** option.

Menu Items

If you only intend to control the HouseMate app with your HouseMate switch then choose **Menu Items->Top Level** and select **Hide All Items**. In this set up, after you launch HouseMate, there is no way for the user to return to the home screen or control other Apps.

Switch Control

If you wish to start the iOS scanning at this point return to **Switch Control** and turn on the Switch Control switch. iOS will start scanning the screen objects and pressing your switch should select the currently highlighted object.

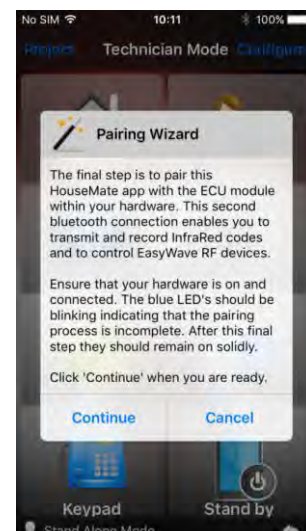
There are lots of other options under Switch Control that control the behaviour of the iOS scanning including Auto Scanning Time, Loops and so on. Take some time exploring these different options so that the scanning can be optimized to suit the user's needs and abilities.

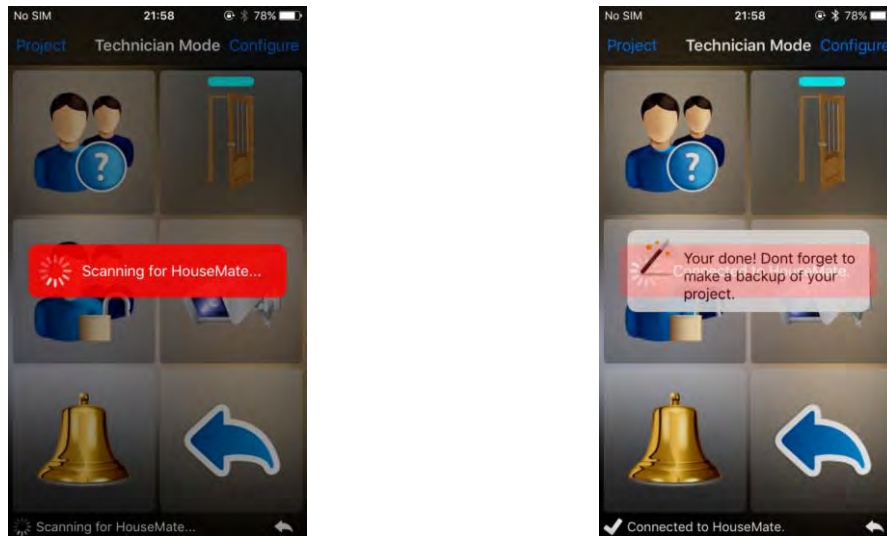
When you are finished, return to the HouseMate app for the final step of setting up your hardware.

Step 5: Pairing the ECU Module.

HouseMate contains a second Bluetooth module, called "**ECU Module**", that communicates with the HouseMate App for transmitting and recording InfraRed signals and other app specific functions. Pairing this module is the final step in setting up your hardware.

Make sure your hardware is on and then press **Continue**. A popup dialog will display the text **Scanning for HouseMate** and after a moment this should change to **Found HouseMate** and then **Connected to HouseMate**.





You can now start using HouseMate to record and transmit InfraRed codes. Refer to the manual for further details. **Go to Project->About HouseMate->User Manual.**

Rebooting for use with an Android device.

To reboot your hardware for use with an Android device you need to be connected to an iOS device.

1. Make sure that you are connected and choose **Project->Setup your devices->HouseMate hardware->Hardware Settings->Factory Reset**
2. Enter the word “factory”
3. You will be asked to unpair the HouseMate Switch before the reboot can take place. This is because the HID must be reconfigured as a bluetooth mouse – HouseMate HID Mouse.
4. The unit will emit a long beep and the red and orange lights will illuminate. HouseMate is now ready for use with an Android device.

Using HouseMate with more than one device.

HouseMate will auto-reconnect to up to 3 Android devices or 3 iOS devices. It will connect to the device it finds first. Turn off the devices that you do not wish to connect to.

It is not possible to use HouseMate with an Android and an iOS device without carrying out the reboot procedure described earlier.