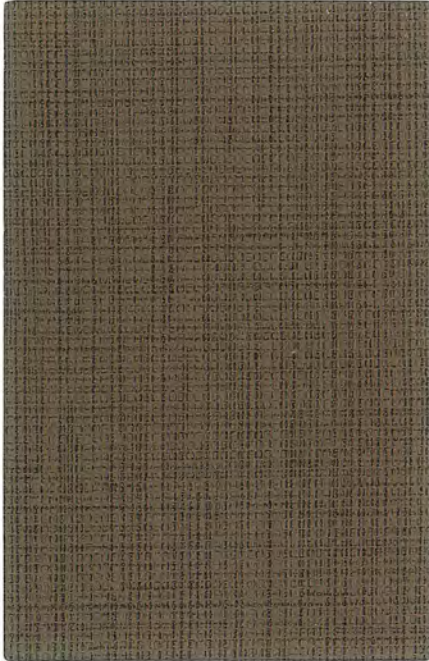


grade 3



**Beeline** Portobello



**Canter** Safari



Canvas



Sisal



Sand



Quarry



Saddle



Nimbus



Sprout



Earth



Tango



Ancho



Eucalyptus



Geyser



Alfalfa



Chestnut



Bordeaux



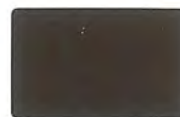
Cork



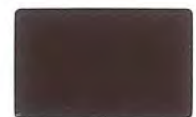
Fossil



Willow



Tawny



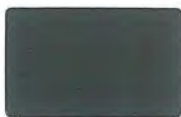
Mica



Walnut



Forge



Storm



Ink



Sable



Tidal



Eclipse



Iron



Night



Onyx

Width/Pattern	Grade	Fiber Content & Backing	Finish	Abrasion (D.R.)	Light-fastness	Cleaning Code
54" <b>BEELINE</b> ☞ ☒ ☼ ☞*	3	100% Polyurethane / PVC Free Polyester Backing	Anti-microbial, Antibacterial	500,000	40 Hrs. Class 4.5	W Bleach Cleanable (4:1)
54" <b>CANTER</b> ☞ ☒ ☼ ☞*	3	100% Polyurethane / PVC Free Polyester Backing	Anti-microbial, Antibacterial	240,000	40 Hrs. Class 4.5	W Bleach Cleanable (4:1)

\* ACT Registered Trademark

Cleaning code: W – Water-based cleaning agents or foam may be used.

Effective September 2014, supersedes all previous cards.

## Special Needs Computers

T: 1-877-724-4922

F: 1-877-724-9996

E: [sales@specialneedscomputers.ca](mailto:sales@specialneedscomputers.ca)

W: [specialneedscomputers.ca](http://specialneedscomputers.ca)

For full fabric selections visit [healthcentric.com](http://healthcentric.com)  
To request samples call 1-866-438-3746  
(Dial Ext. 222, 229 or 234 for Customer Service)

health**H**centric  
medical grade seating

A division of ergoCentric Seating Systems