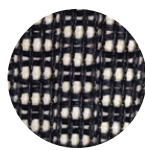












### Fabric Options Flex Mesh Technology



Black

### Packed with Features

-  *Dynamic Variable Lumbar (DVL) Support*
-  *Height-Adjustable Backrest*
-  *Full Resiliency Molded Foam Seat*
-  *Under-seat tension adjustment*
-  *Adjustable Seat Height*
-  *Tilt Lock*
-  *Height Adjustable Arms*
-  *Flex Mesh Technology*

**X-BASIC** X-Basic has maintained the benefits of the DVL and Flex mesh, but we have limited some of the other features found on the X1 through X4 lineup. The mechanism has the tension control underneath and is less precise than the mechanisms on our other chairs. There is no seat slide functionality, and the arms are only height adjustable. The foam seat offers a comfortable, supportive feel.

### Dynamic Variable Lumbar Support

The Dynamic Variable Lumbar (DVL) Support intuitively adjusts itself to your body every time you move. Responding to your weight, height, position, and the amount of pressure you place on it, the DVL Support pivots with you, keeping you comfortable and supported even as you change positions throughout the day. Be free to keep your mind on your work, not your back.



**SPECIAL NEEDS  
COMPUTERS**

**X-CHAIR**

**This is Not Your Grandfather's Office Chair!**